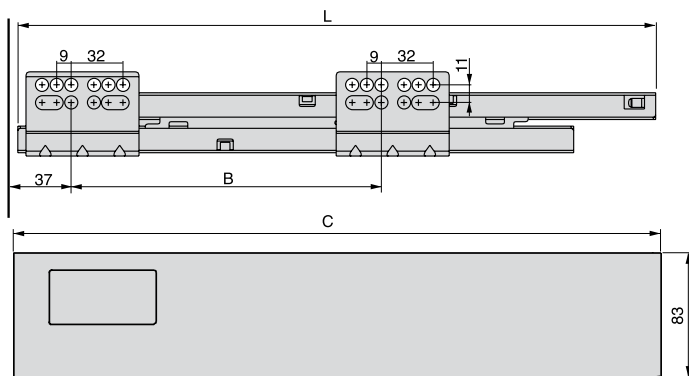
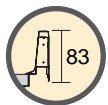


## VANTAGE-Q



Prof.	L	B	C
270	265	96	267
300	295	128	297
350	345	128	347
400	395	192	397
450	445	224	447
500	495	224	497

83 mm | Cajón  
Cassetto  
Drawer  
Tiroir  
Gaveta

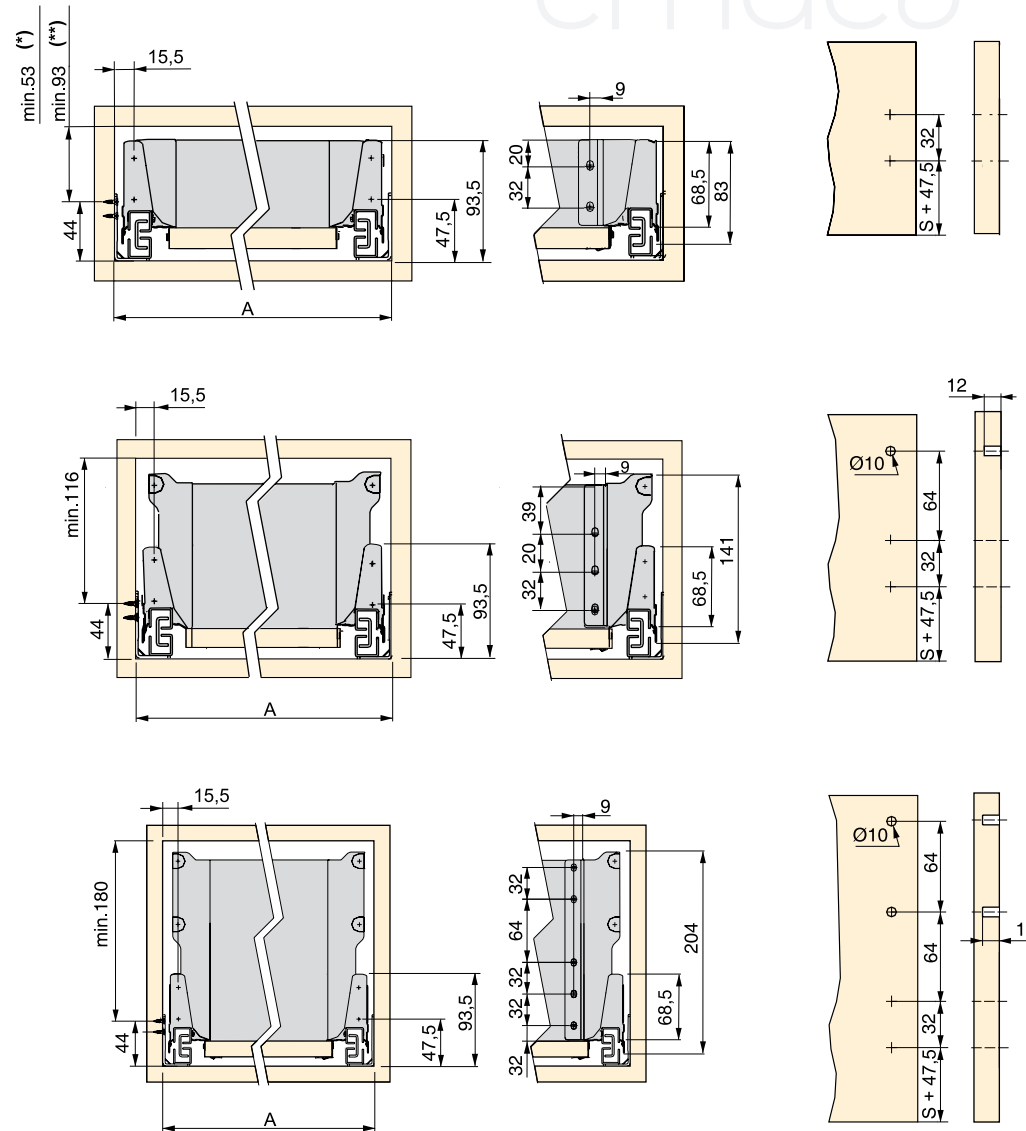
141 mm | Cajón  
Cassetto  
Drawer  
Tiroir  
Gaveta

204 mm | Cajón  
Cassetto  
Drawer  
Tiroir  
Gaveta

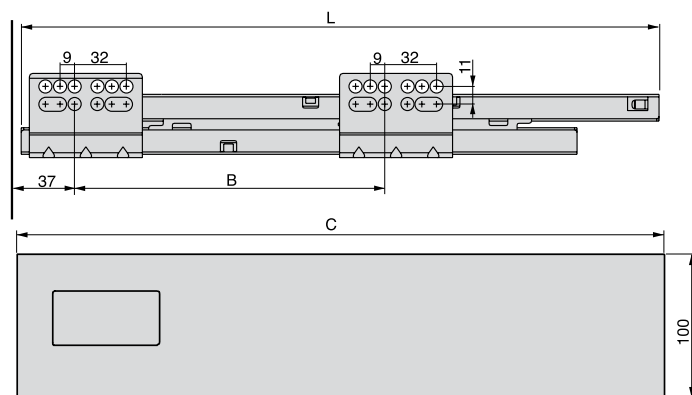
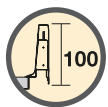
S= Solape  
Sormonto  
Overlay  
Recouvrement  
Sobreposição da ilharga

(\*)= cajón exterior - cassetto esterno - outer drawer - tiroir extérieur - gaveta exterior

(\*\*)= cajón interior - cassetto interno - inner drawer - tiroir intérieur - gaveta interior



## VANTAGE-Q



Prof.	L	B	C
350	345	128	347
450	445	224	447
500	495	224	497

83 mm	Cajón Cassetto Drawer Tiroir Gaveta
-------	---

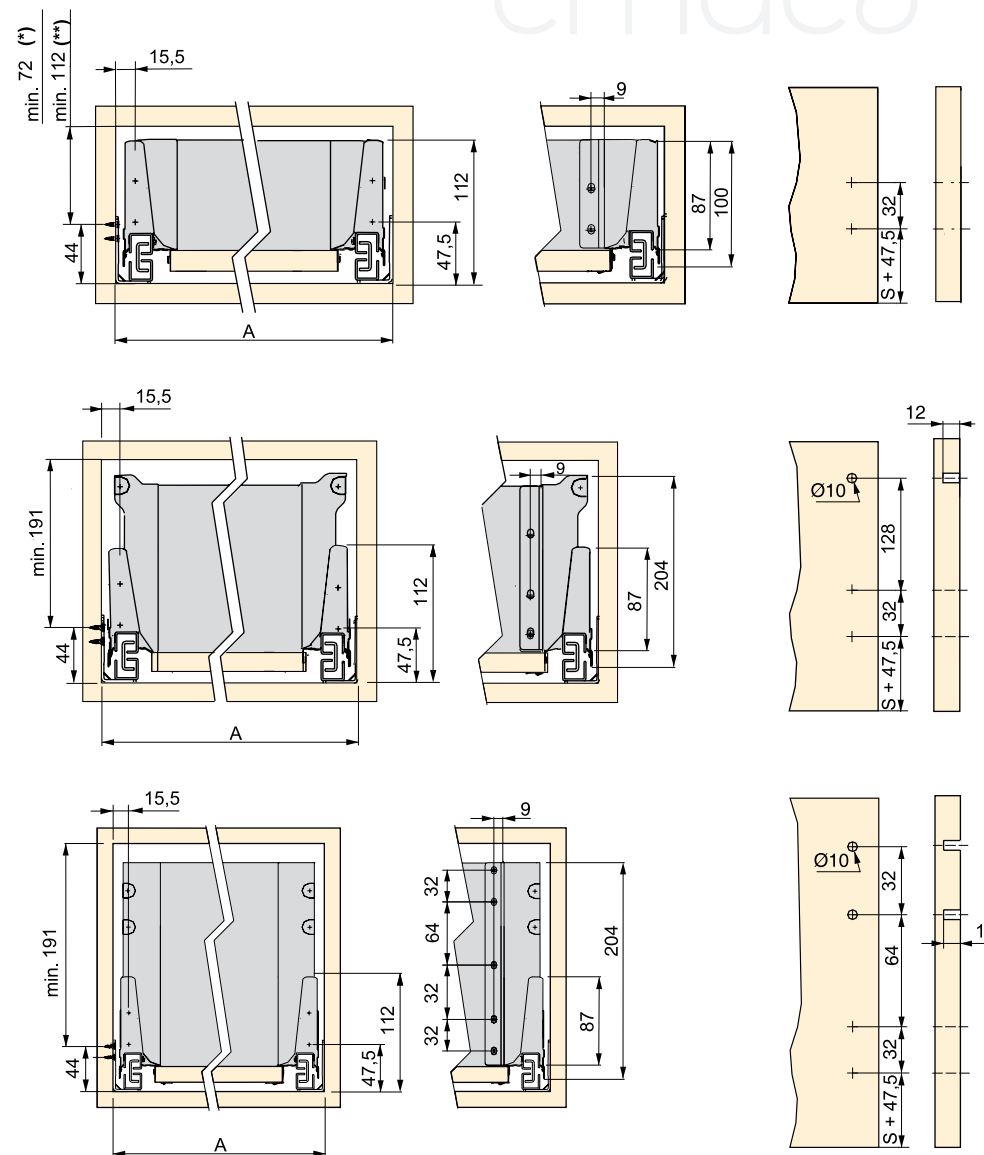
141 mm	Cajón Cassetto Drawer Tiroir Gaveta
--------	---

204 mm	Cajón Cassetto Drawer Tiroir Gaveta
--------	---

S= Solape  
Sormonto  
Overlay  
Recouvrement  
Sobreposição da ilharga

(\*)= cajón exterior - cassetto esterno - outer drawer- tiroir exterieur - gaveta exterior

(\*\*)= cajón interior - cassetto interno - inner drawer - tiroir intérieur - gaveta interior



EMUCA, S.A.  
Valencia (España)  
Tel: +34 96 166 70 19  
Fax: +34 96 166 71 82



**efr**  
empresa

EMUCA, S.r.l.  
Padova (Italy)  
Tel: 0039+ 0498702800  
Fax: 0039+ 0498703019



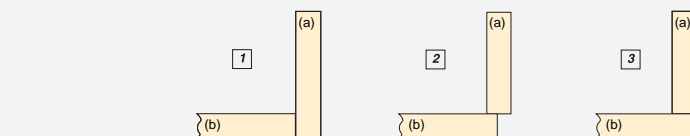
EMUCA, Ltd.  
Basildon ESSEX (United Kingdom)  
Tel: +44 1268 530674  
Fax: +44 1268 828592

EMUCA, Sarl.  
Paris (France)  
Tel: 09 77197 499

EMUCA, Lda.  
Lisboa (Portugal)  
Tel: +34 96 166 70 19  
Fax: +34 96 166 71 82

Made  
in China

OPCION  
OPZIONE  
OPTION  
OPTION  
OPÇÃO



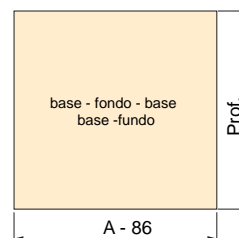
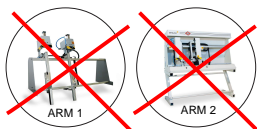
(a): trasera - schiena - back plate - façade arrière - traseira  
(b): base - fondo - base - base - fundo

LONGITUD FONDO - LUNGHEZZA FONDO - BOTTOM LENGHT - LONGUEUR DU FOND DE TIROIR - COMPRIMENTO FUNDO

Opcion - Opzione - Option - Option - Opção		
1	2(*)	3(**)
Prof - 24	Prof - 20	Prof - 4

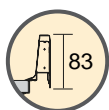
(\*)  
Opción para montaje de trasera metálica.  
Opzione per montaggio di schiena metallica.  
Option to assembly metal back panel.  
Option pour montage façade arrière métallique.  
Opção para montagem de traseira de metal.

(\*\*) Opción 3 / Opzione 3 / Option 3 / Option 3 / Opção 3:

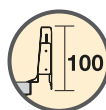


Espesor tablero - Spessore pannello  
Board thickness - Panneau - Espessura do painel :16mm

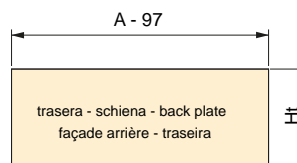
ALTURA TRASERA - ALTEZZA SCHIENA - DRAWER PANEL HEIGHT - HAUTEUR FAÇADE ARRIÈRE - ALTURA TRASEIRA



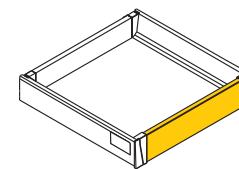
			Opcion - Opzione - Option - Option - Opção	
			1	2 - 3
Cajón	83		84	68
Cassetto				
Drawer	141	Ht	135	119
Tiroir				
Gaveta	204		199	183



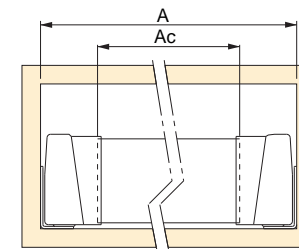
			Opcion - Opzione - Option - Option - Opção	
			1	2 - 3
Cajón	100		102,5	86,5
Cassetto				
Drawer				
Tiroir				
Gaveta	204	Ht	199	183



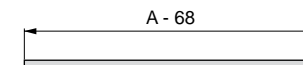
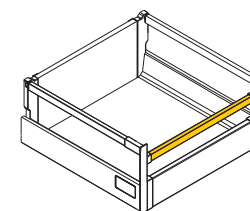
CAJÓN INTERIOR  
CASSETTO INTERNO  
INNER DRAWER  
TIROIR INTÉRIEUR  
GAVETA INTERIOR



$$Ac = A - 98$$



BARANDILLA FRONTAL PARA CAJÓN INTERIOR  
ASTINA FRONTALE PER CASSETTO INTERNO  
FRONTAL RAILING FOR INNER DRAWER  
FRONTAL RAILING FOR INNER DRAWER  
REHAUSSE FRONTALE POUR TIROIR INTÉRIEUR  
CERCO FRONTAL PARA GAVETA INTERIOR



A= Interior módulo / Interno modulo /  
Inner module / Interieur caisson / Interior  
de módulo



EMUCA, S.A.  
Valencia (España)  
Tel: +34 96 166 70 19  
Fax: +34 96 166 71 82



EMUCA, S.r.l.  
Padova (Italy)  
Tel: 0039+ 0498702800  
Fax: 0039+ 0498703019



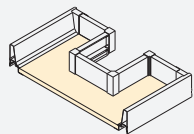
EMUCA, Ltd.  
Basildon ESSEX (United Kingdom)  
Tel: +44 1268 530674  
Fax: +44 1268 828592

EMUCA, Sarl.  
Paris (France)  
Tel: 09 77197 499

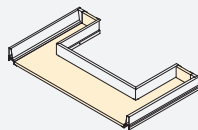
EMUCA, Lda.  
Lisboa (Portugal)  
Tel: +34 96 166 70 19  
Fax: +34 96 166 71 82

Made  
in China

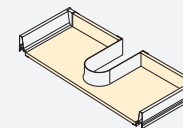
BAJO FREGADERO - SCHIENA SAGOMATA - UNDER-SINK INSERT - SOUS-ÉVIER - BAIXO LAVA-LOIÇAS



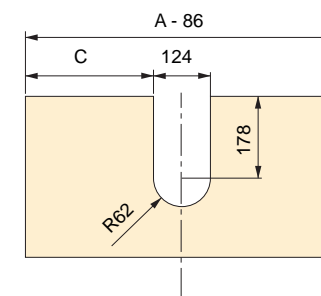
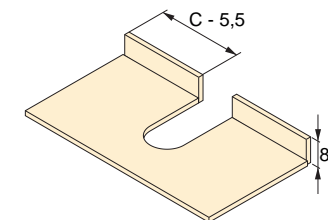
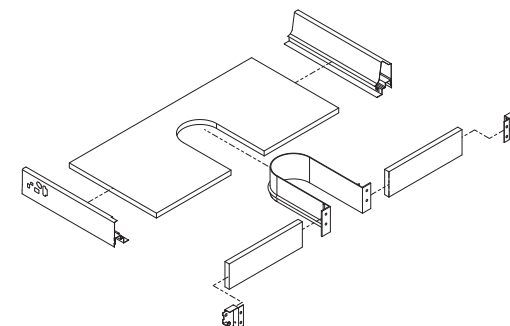
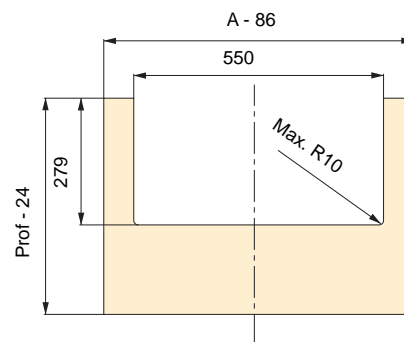
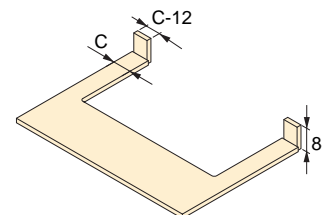
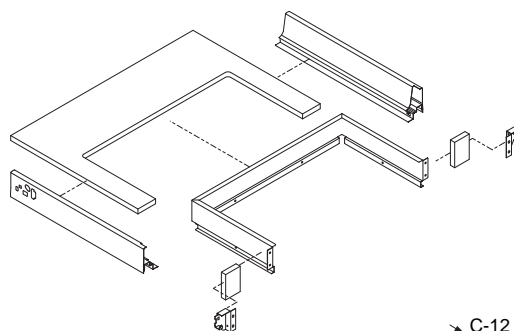
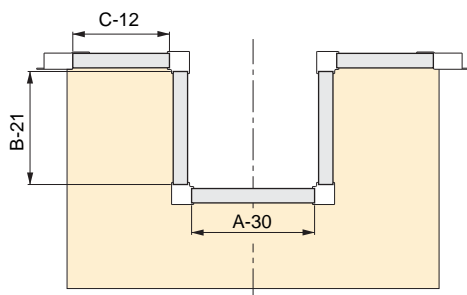
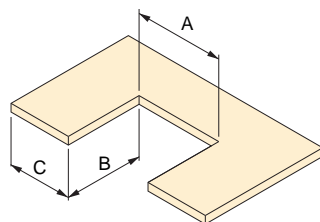
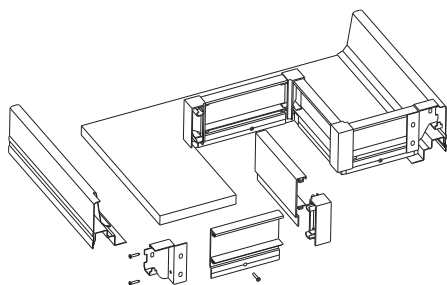
Aluminio  
Alluminio  
Aluminium  
Aluminium  
Alumínio



Metálico  
Acciaio  
Steel  
Acier  
Metal



Plástico  
Tecnoplastica  
Plastic  
Plastique  
Plástico



EMUCA, S.A.  
Valencia (España)  
Tel: +34 96 166 70 19  
Fax: +34 96 166 71 82



EMUCA, S.r.l.  
Padova (Italy)  
Tel: 0039+ 0498702800  
Fax: 0039+ 0498703019

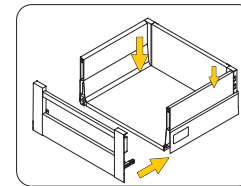
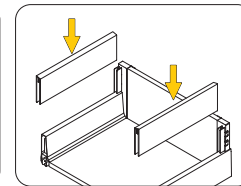
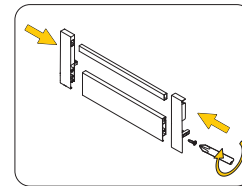
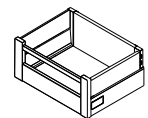
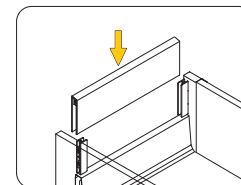
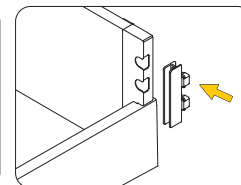
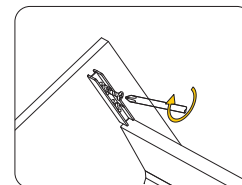
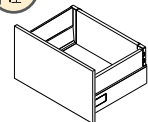
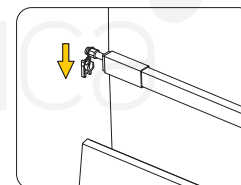
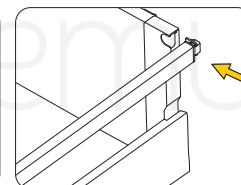
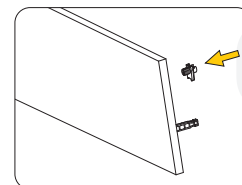
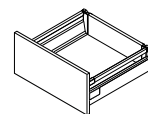
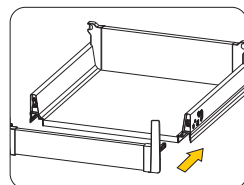
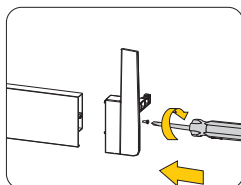
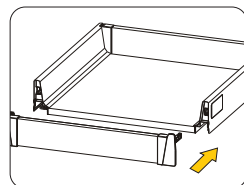
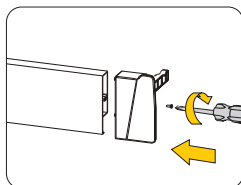
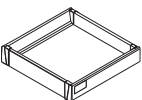
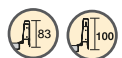
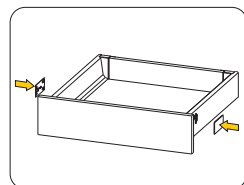
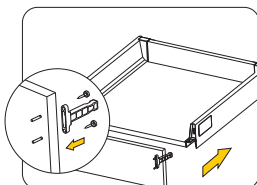
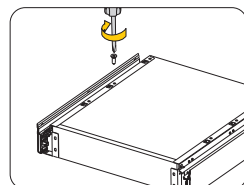
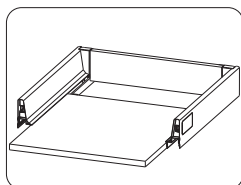
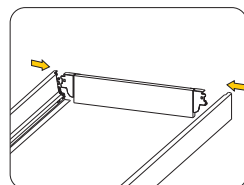
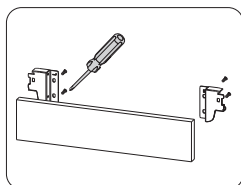
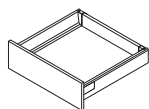


EMUCA, Ltd.  
Basildon ESSEX (United Kingdom)  
Tel: +44 1268 530674  
Fax: +44 1268 828592

EMUCA, Sarl.  
Paris (France)  
Tel: 09 77197 499

EMUCA, Lda.  
Lisboa (Portugal)  
Tel: +34 96 166 70 19  
Fax: +34 96 166 71 82

Made  
in China

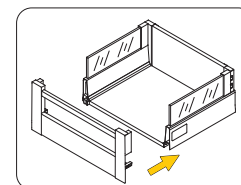
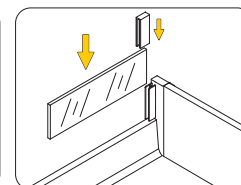
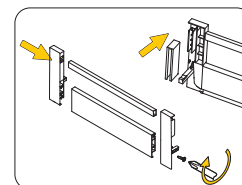
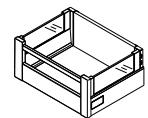
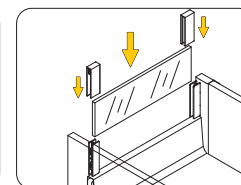
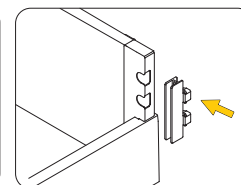
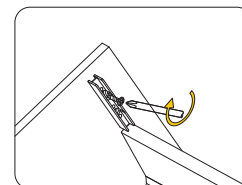
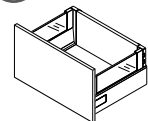


H:204

LATERAL METÁLICO - SUPPLEMENTI METALLO - METAL SUPPLEMENTS - LATÉRAL MÉTAL - LATERAL METALICO

H:204

LATERAL CRISTAL - SUPPLEMENTI VETRO - GLASS SUPPLEMENTS - LATÉRAL VERRE - LATERAL VIDRIO



EMUCA, S.A.  
Valencia (España)  
Tel: +34 96 166 70 19  
Fax: +34 96 166 71 82



EMUCA, S.r.l.  
Padova (Italy)  
Tel: 0039+ 0498702800  
Fax: 0039+ 0498703019



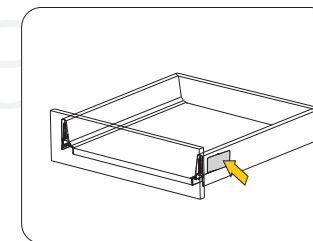
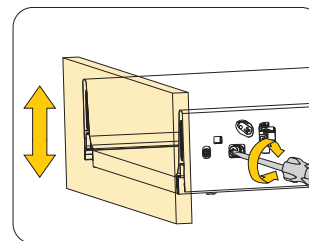
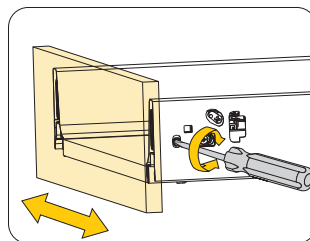
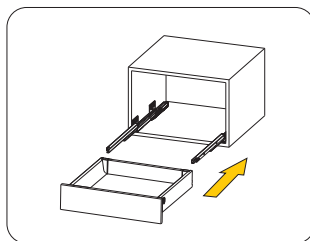
EMUCA, Ltd.  
Basildon ESSEX (United Kingdom)  
Tel: +44 1268 530674  
Fax: +44 1268 828592

EMUCA, Sarl.  
Paris (France)  
Tel: 09 77197 499

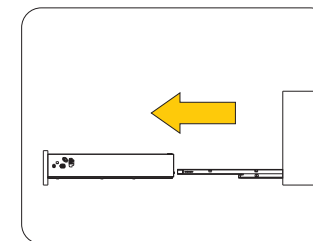
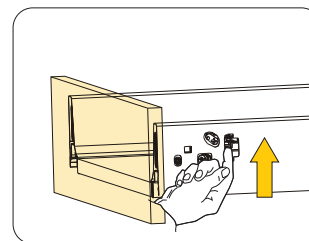
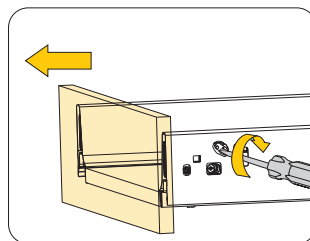
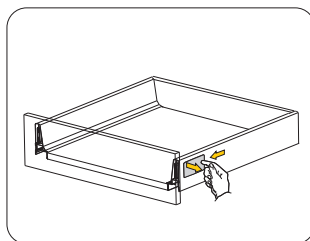
EMUCA, Lda.  
Lisboa (Portugal)  
Tel: +34 96 166 70 19  
Fax: +34 96 166 71 82

Made  
in China

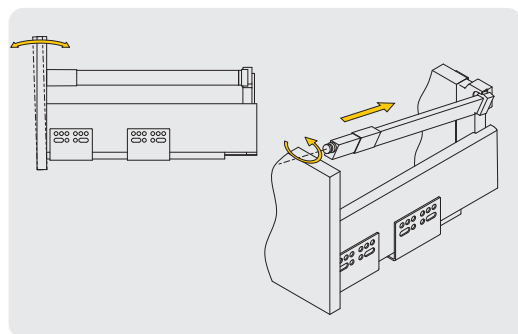
REGULACIÓN  
REGOLAZIONE  
ADJUSTMENT  
RÉGLAGE  
REGULAÇÃO



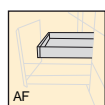
DESMONTAJE  
SMONTAGGIO  
DISMOUTING  
DÉMONTAGE  
DESMONTAGEM



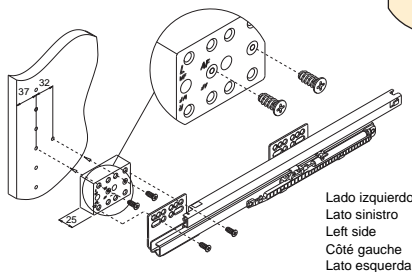
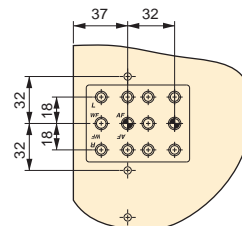
AJUSTE INCLINACIÓN FRENTE  
REGOLAZIONE DE L'INCLINAZIONE DEL FRONTALE  
ADJUSTMENT TILT FRONT  
RÉGLAGE DE LA FAÇADE  
REGULAÇÃO FRENTE



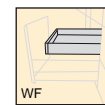
## CAJÓN INTERIOR - CASSETTO INTERNO - INNER DRAWER - TIROIR INTÉRIEUR - GAVETA INTERIOR



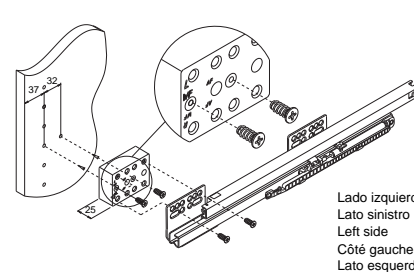
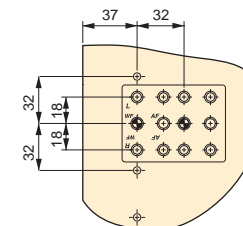
Frente de aluminio  
Frontalini in alluminio  
Aluminium front  
Façade en aluminium  
Frente de alumínio



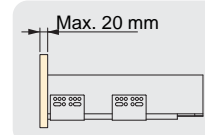
Lado izquierdo  
Lato sinistro  
Left side  
Côté gauche  
Lato esquerda



Frente de madera  
Frontalini in Legno  
Wood front  
Façade en bois  
Frente de madeira



Lado izquierdo  
Lato sinistro  
Left side  
Côté gauche  
Lato esquerda



EMUCA, S.A.  
Valencia (España)  
Tel: +34 96 166 70 19  
Fax: +34 96 166 71 82



EMUCA, S.r.l.  
Padova (Italy)  
Tel: 0039+ 0498702800  
Fax: 0039+ 0498703019



EMUCA, Ltd.  
Basildon ESSEX (United Kingdom)  
Tel: +44 1268 530674  
Fax: +44 1268 828592

EMUCA, Sarl.  
Paris (France)  
Tel: 09 77197 499

EMUCA, Lda.  
Lisboa (Portugal)  
Tel: +34 96 166 70 19  
Fax: +34 96 166 71 82

Made  
in China